

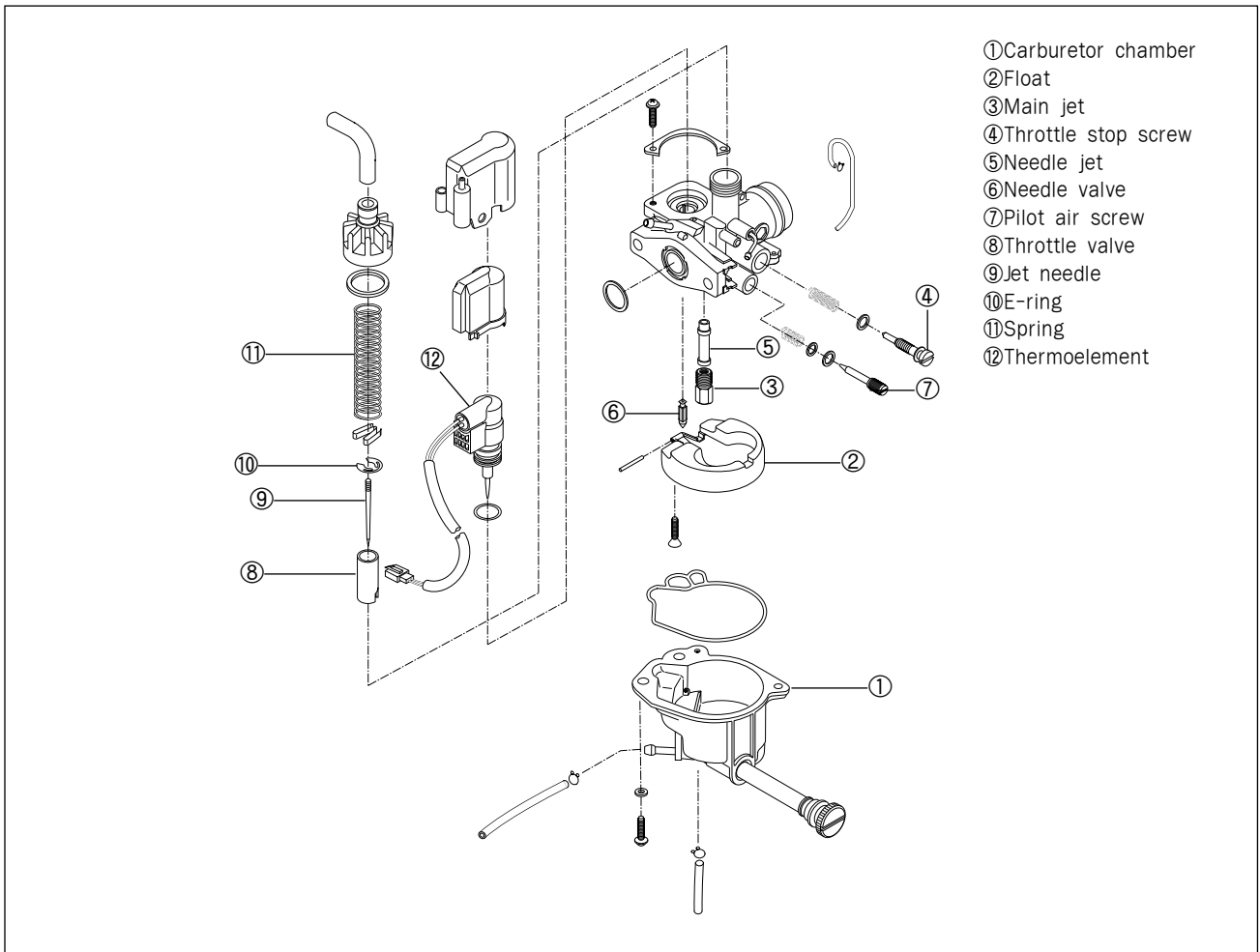
FUEL AND LUBRICATION SYSTEM

CONTENTS

CARBURETOR	4- 1
REMOVAL	4- 1
DISASSEMBLY	4- 2
INSPECTION	4- 4
REASSEMBLY AND REMOUNTING	4- 4
FUEL TANK	4- 6
REMOVAL	4- 6
REMOUNTING	4- 7
OIL PUMP	4- 8

4-1 FUEL AND LUBRICATION SYSTEM

CARBURETOR

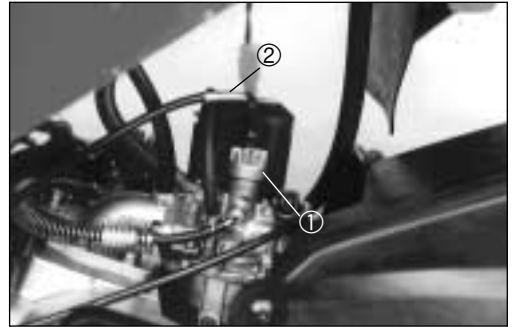


REMOVAL

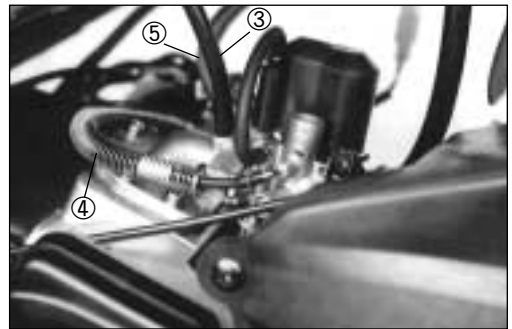
- Remove the side cover. (Refer to page 6-3)
- Remove the absorber mounting lower bolt.



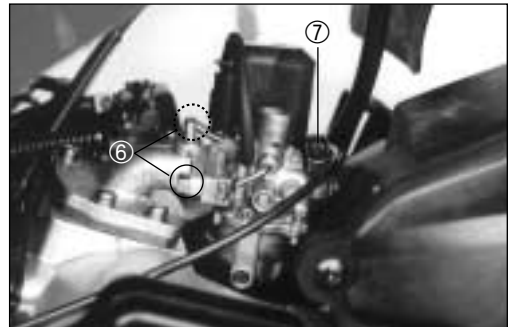
- Remove the carburetor top cap ①, and disconnect the throttle cable ②.



- Disconnect the carburetor hoses and oil hose.
Vacuum hose ③.
Oil hose ④.
Fuel hose ⑤.



- Remove the carburetor by loosening the mounting bolts ⑥ and clamp screw ⑦.



DISASSEMBLY

- Remove the thermoelement assembly.

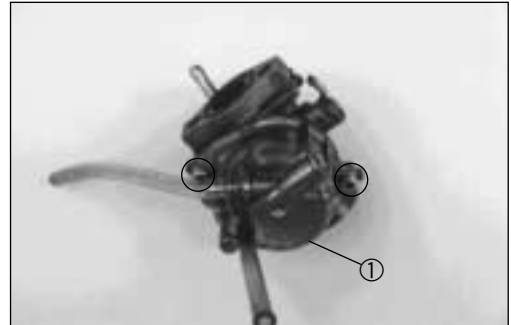


CAUTION:
Do not attempt to disassemble the thermoelement assembly.
It is not serviceable.

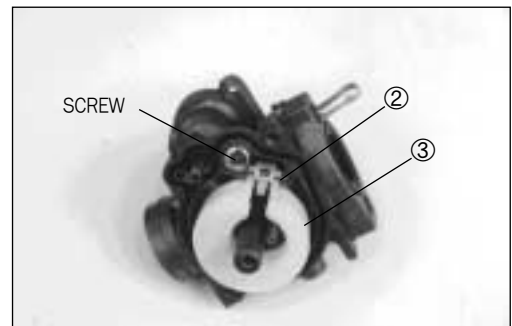


4-3 FUEL AND LUBRICATION SYSTEM

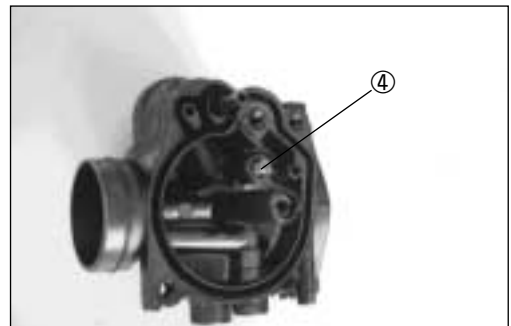
- Remove the float chamber ①.



- Remove the float ③ by removing the screw and pin ②.



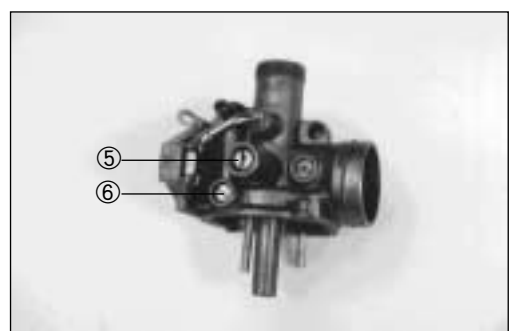
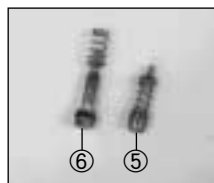
- Remove the needle valve ④.



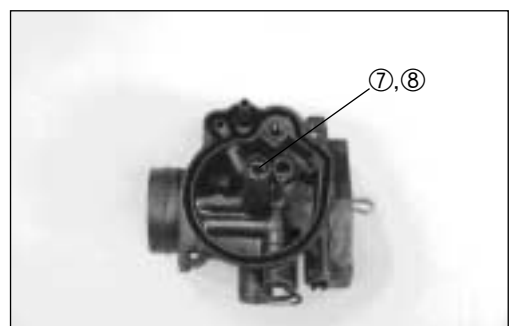
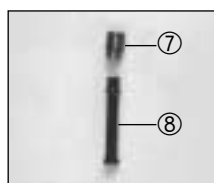
- Remove the throttle stop screw ⑤ and pilot air screw ⑥.

NOTE:

When removing the pilot air screw, record the revolutions until tighten completely.



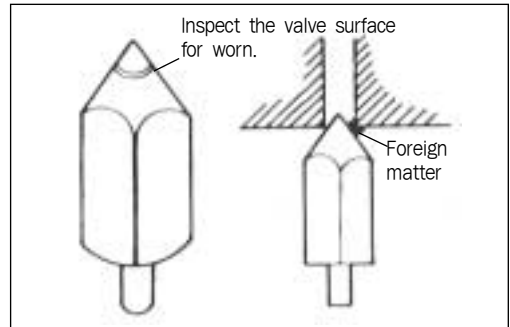
- Remove the main jet ⑦ and needle jet ⑧.



INSPECTION

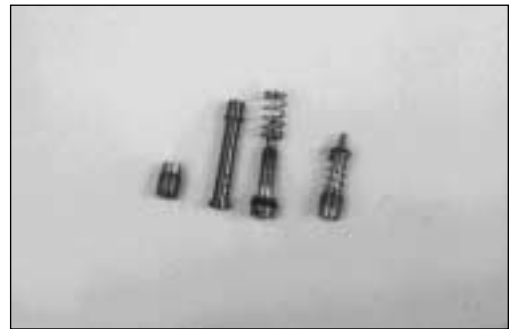
Check following items for any damage or clogging.

- Pilot jet
- Main jet
- Pilot air screw
- Needle jet air bleeding hole
- Float
- Gasket
- Pilot outlet and bypass holes



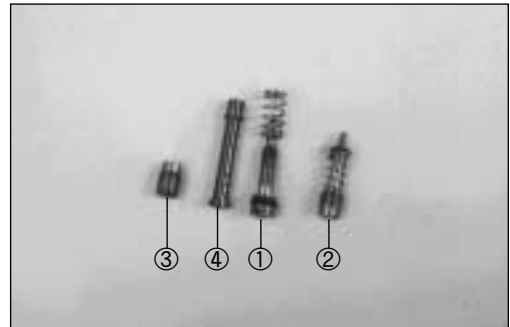
NEEDLE VALVE INSPECTION

If foreign matter is caught between the valve seat and the needle, the gasoline will continue flowing and cause it to overflow. If the seat and needle are worn beyond the permissible limits, similar trouble will occur. Conversely, if the needle sticks, the gasoline will not float chamber. Clean the float chamber and float parts with gasoline. If the needle is worn as shown in the illustration, replace it together with a valve seat. Clean the fuel passage of the mixing chamber with compressed air.

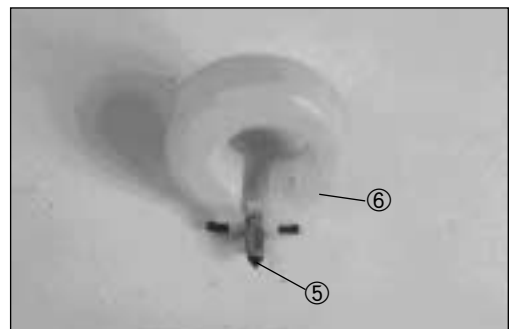


REASSEMBLY AND REMOUNTING

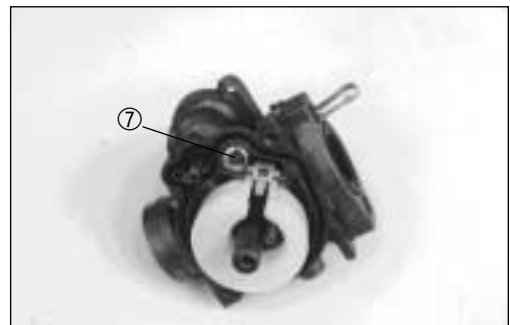
- Reassemble following items.
 - ① Pilot air screw
 - ② Throttle stop screw
 - ③ Main jet
 - ④ Needle jet



- Install the needle ⑤ and float ⑥ on the carburetor body.



- Install the float pin and tightened the screw ⑦.
- Install the gasket and float chamber.

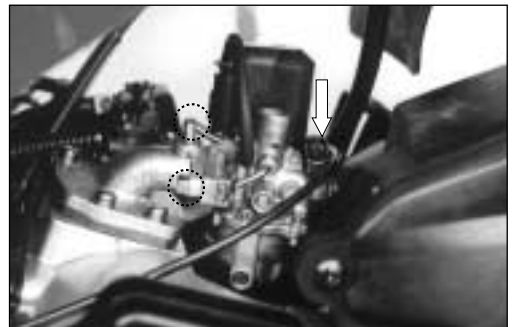


4-5 FUEL AND LUBRICATION SYSTEM

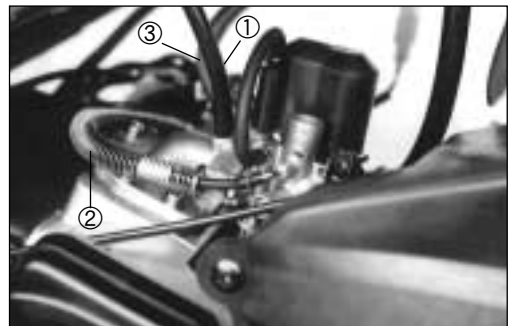
- Install the thermoelement assembly.



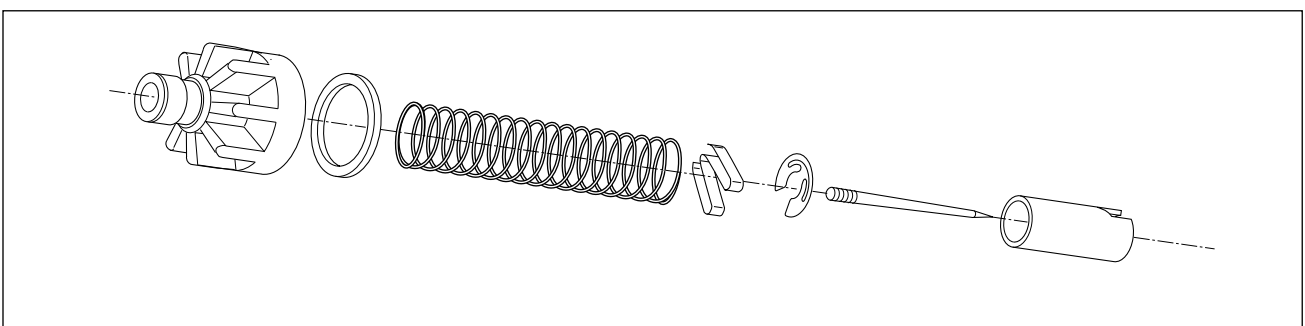
- Install the carburetor assembly.



- Install the vacuum hose ①, oil hose ② and fuel hose ③.



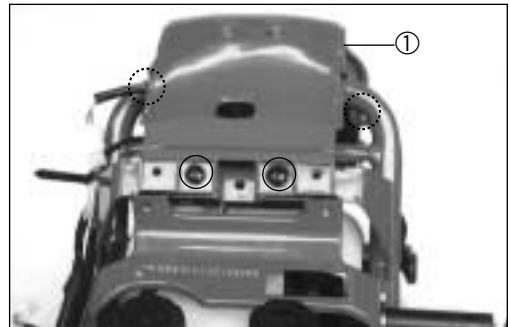
- Install the carburetor top cap.



FUEL TANK

REMOVAL

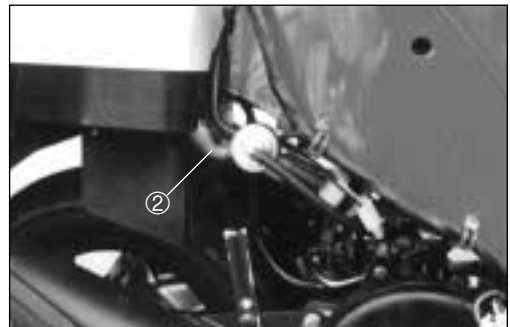
- Remove the side covers. (Refer to page 6-3)
- Remove the rear center cover ①.



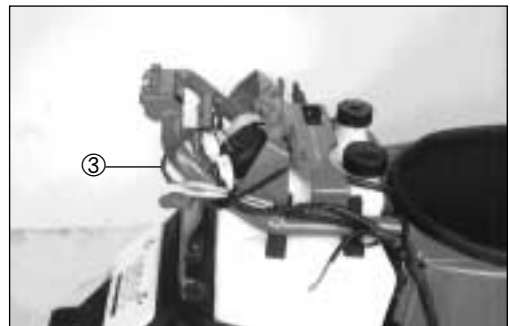
- Disconnect the fuel hose ②.

NOTE:

To prevent fuel flow, connect the suitable cap to the fuel tank outlet.



- Disconnect the oil gauge lead wire ③.



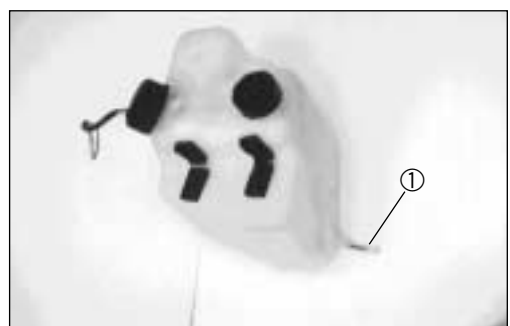
- Remove the shock absorber mounting lower bolt.
- Remove the rear fender bolts, then take off the rear fender.



CLEANING

Dust from the fuel tank tends to build up in the fuel filter which, when the fuel filter has been neglected for a long period, inhibits the flow of fuel.

Remove the dust from the fuel filter ① using compressed air.

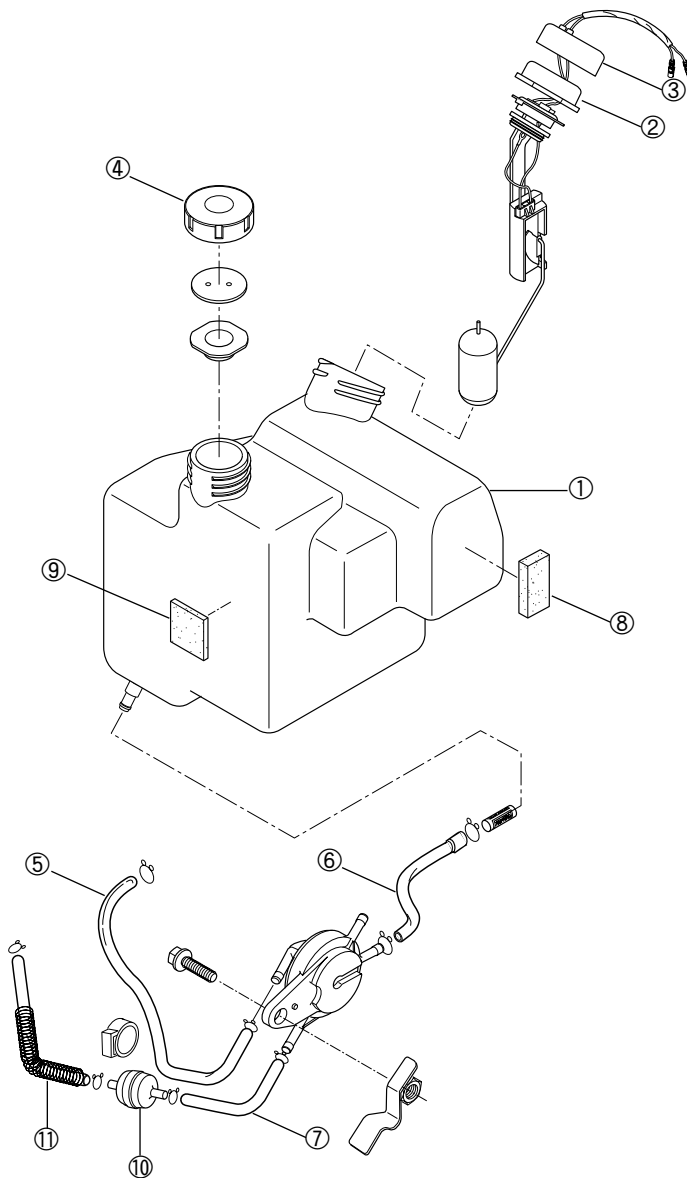


4-7 FUEL AND LUBRICATION SYSTEM

REMOUNTING

Remount the fuel tank in the reverse of removal.

- ① Fuel tank
- ② Fuel level gauge
- ③ Fuel level gauge cap
- ④ Fuel tank cap
- ⑤ Vacuum hose
- ⑥ Inlet hose
- ⑦ Outlet hose No.1
- ⑧ ⑨ Cushion
- ⑩ Fuel strainer
- ⑪ Outlet hose No.2

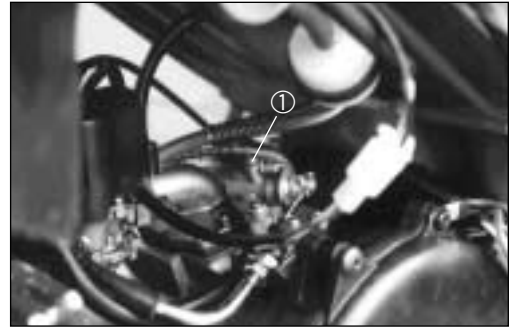


OIL PUMP

AIR BLEEDING

Whenever evidence is noted of some air having leaked into the oil pipe from the oil tank in a machine brought in for servicing, or if the oil pump has to be removed for servicing, be sure to carry out an air bleeding operation with the oil pump in place before returning the machine to the user.

To bleed air, hold the machine in standstill condition. Loosen the screw ① to let out air and after making sure that the trapped air has all been bled, tighten the screw good and here.



CHECKING OIL PUMP

Use the special tool, to check the pump for capacity by measuring the amount of oil the pump draws during the specified interval.

- Remove the left side cover.
- Have the tool filled with HYOSUNG HYPOL OIL and connect it to the suction side of the pump.
- Run the engine at 3000 r/min.
- Holding engine speed at the same 3000 r/min., let the pump draw for 5 minutes. For this operation, the reading taken on the device should be 0.9~1.1 ml.



09900-21602	CCI oil gauge
-------------	---------------

Oil discharge amount	0.9-1.1 ml at 3000 r/min. for 5 minutes.
----------------------	---------------------------------------------

CAUTION:

During this inspection, strictly follow the following points.

- * **The machine should be rested on the center stand.**
- * **Do not touch the rear wheel while running the engine.**