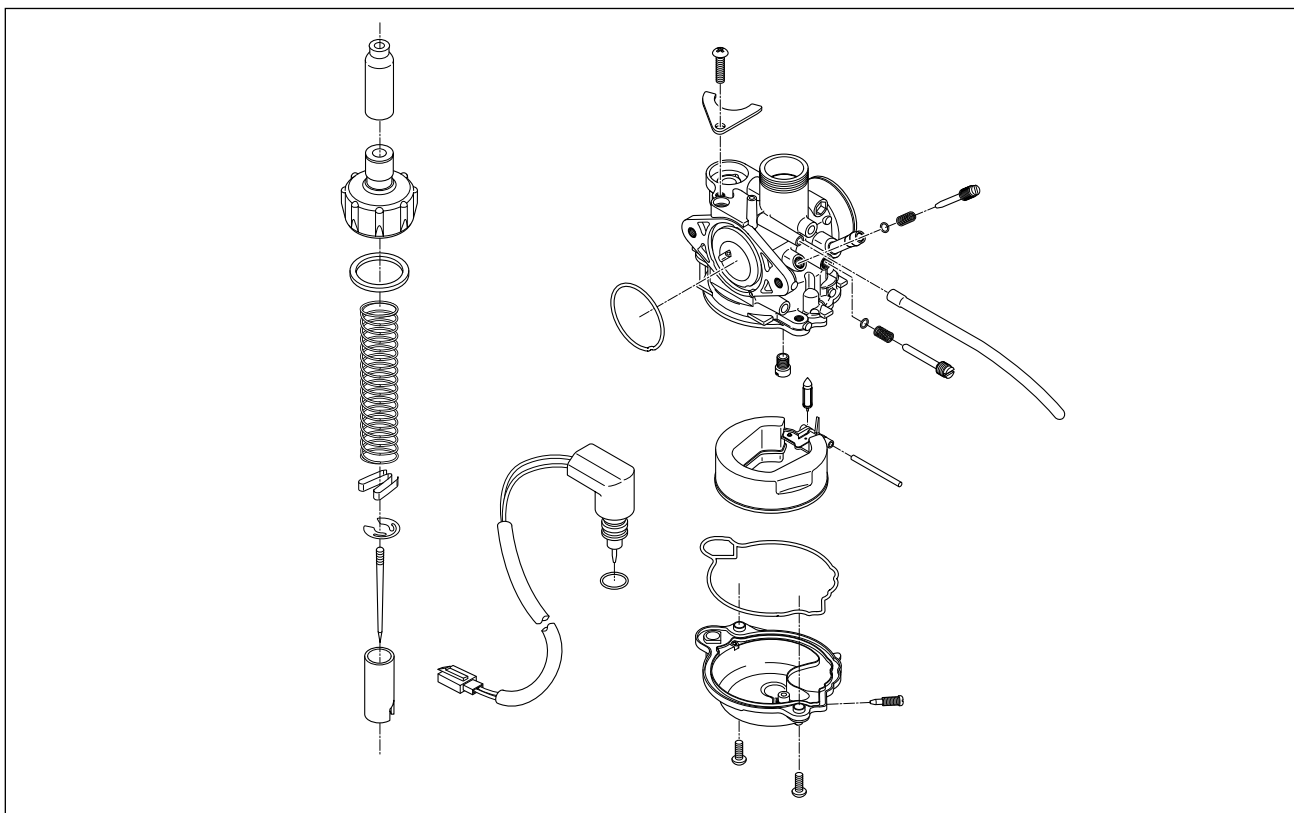


FUEL SYSTEM

CONTENTS

CARBURETOR	4- 1
REMOVAL	4- 1
DISASSEMBLY	4- 2
INSPECTION	4- 4
REASSEMBLY AND REMOUNTING	4- 5
FUEL TANK	4- 7
REMOVAL	4- 7
CLEANING	4- 8
REMOUNTING	4- 8
OIL PUMP	4- 8
FUEL PUMP	4- 9

CARBURETOR



REMOVAL

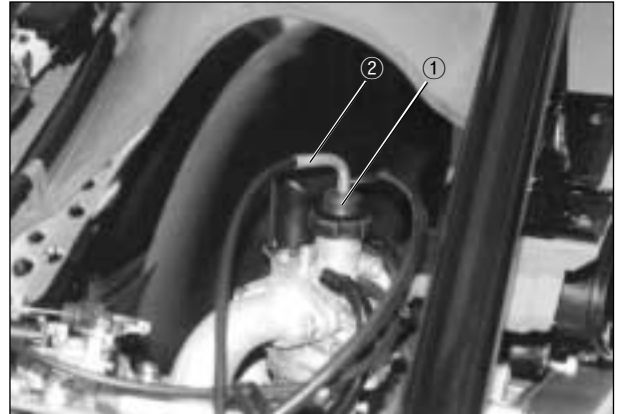
- Open the seat, and separate the helmet box by removing the four lock nuts.



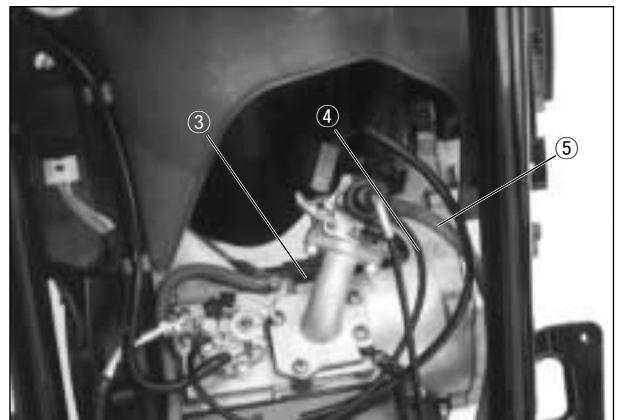
- Remove the rear shock absorber mounting lower bolt.



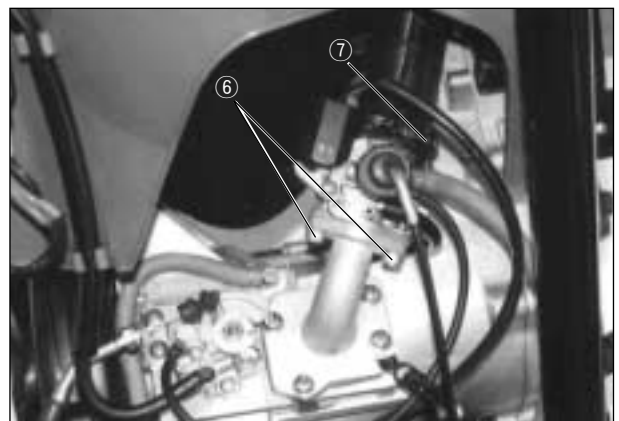
- Remove the carburetor top cap ①, and disconnect the throttle cable ②.



- Disconnect the air vent hose ③, oil hose ④, and fuel hose ⑤.



- Remove the carburetor by loosening the mounting bolts ⑥ and clamp screw ⑦.



DISASSEMBLY

- Remove the thermoelement assembly.



4-3 FUEL SYSTEM

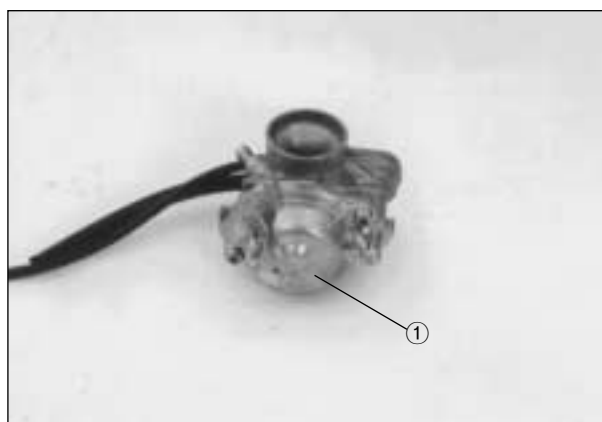
⚠ CAUTION

Do not attempt to disassemble the thermoelement assembly.

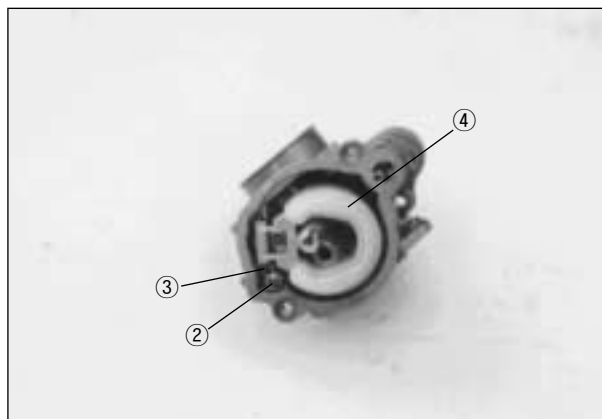
It is not serviceable.



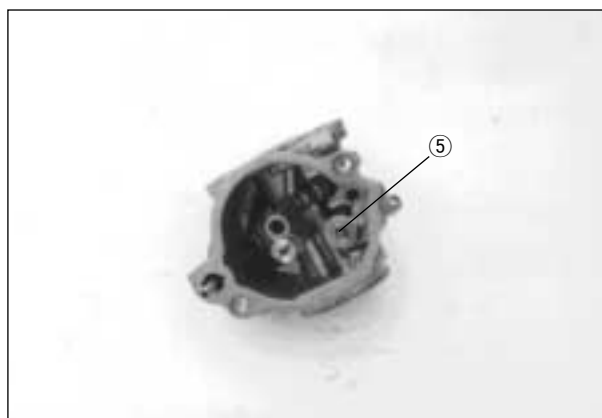
- Remove the float chamber ①.



- Remove the float ④ by removing the screw ② and pin ③.



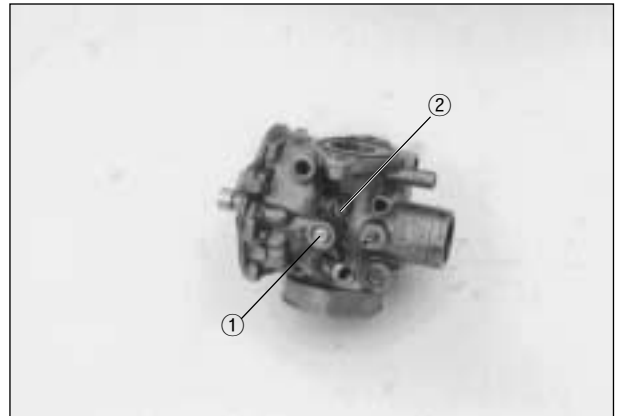
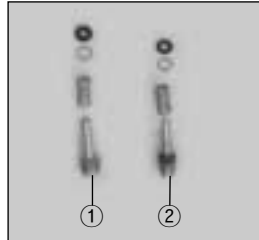
- Remove the needle valve ⑤.



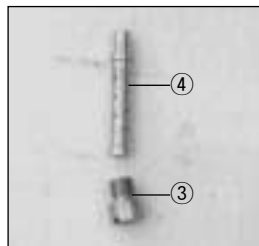
- Remove the throttle stop screw ① and pilot air screw ②.

CAUTION

When removing the pilot air screw, record the revolutions until tighten completely.



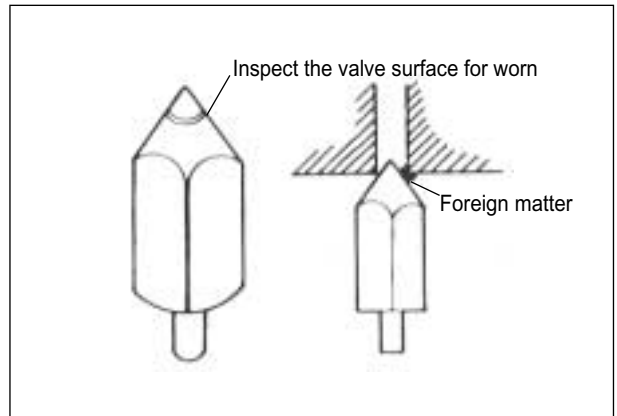
- Remove the main jet ③ and needle jet ④.



INSPECTION

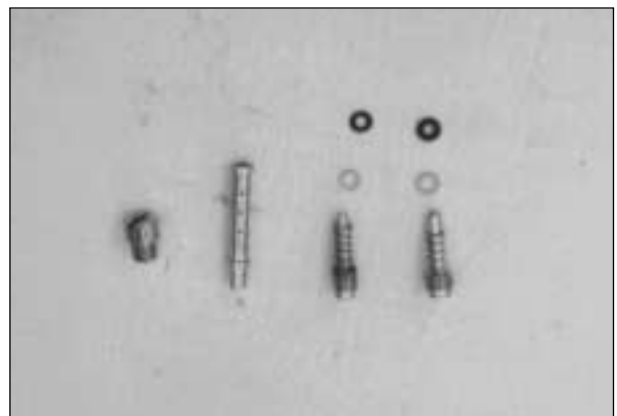
Check following items for any damage or clogging.

- Pilot jet
- Main jet
- Pilot air screw
- Needle jet air bleeding hole
- Float
- Gasket
- Pilot outlet and bypass holes



NEEDLE VALVE INSPECTION

If foreign matter is caught between the valve seat and the needle, the gasoline will continue flowing and cause it to overflow. If the seat and needle are worn beyond the permissible limits, similar trouble will occur. Conversely, if the needle sticks, the gasoline will not float chamber. Clean the float chamber and float parts with gasoline. If the needle is worn as shown in the illustration, replace it together with a valve seat. Clean the fuel passage of the mixing chamber with compressed air.

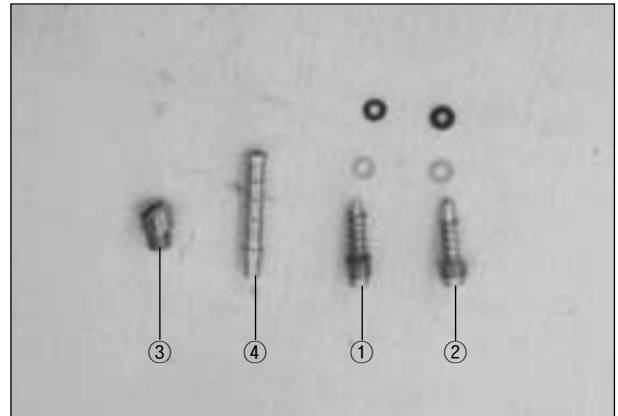


4-5 FUEL SYSTEM

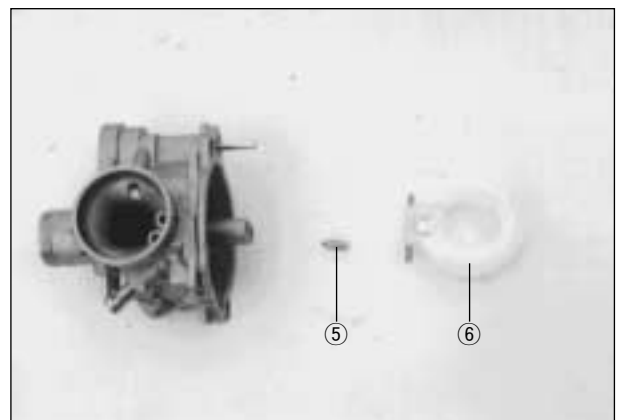
REASSEMBLY AND REMOUNTING

● Reassemble following items.

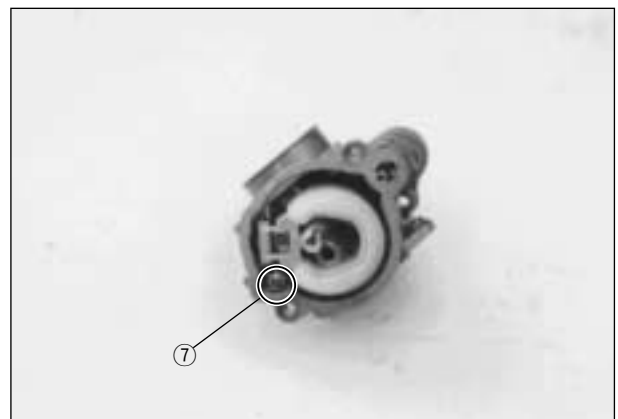
- ① Pilot air screw
- ② Throttle stop screw
- ③ Main jet
- ④ Needle jet



● Install the needle valve ⑤ and float ⑥ on the carburetor body.



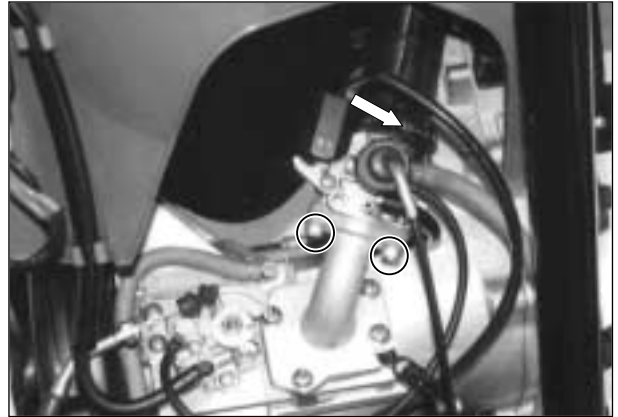
- Install the float pin and tightened the screw ⑦.
- Install the gasket and float chamber.



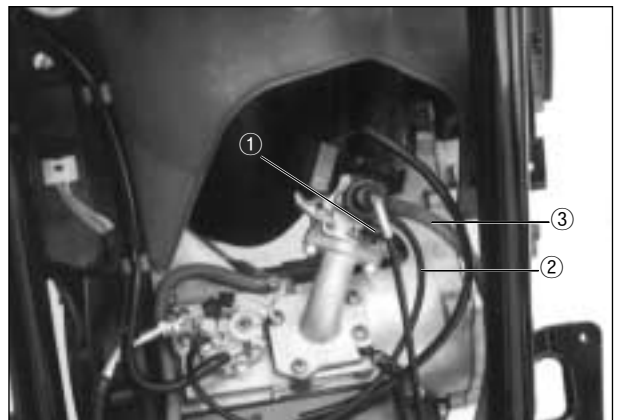
● Install the thermoelement assembly.



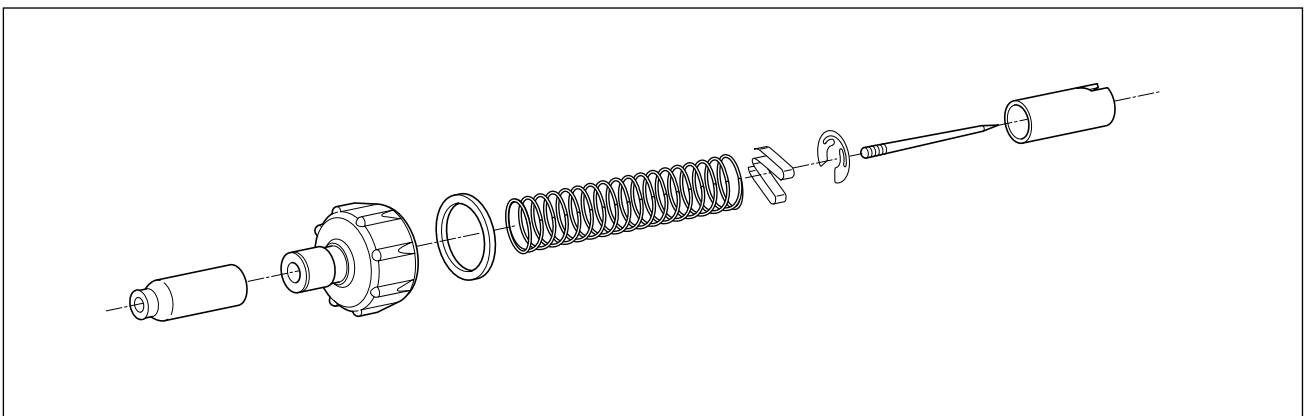
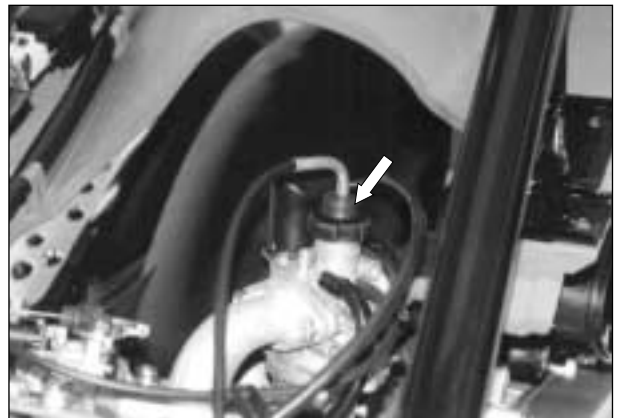
- Install the carburetor assembly.



- Install the air vent hose ①, oil hose ② and fuel hose ③.



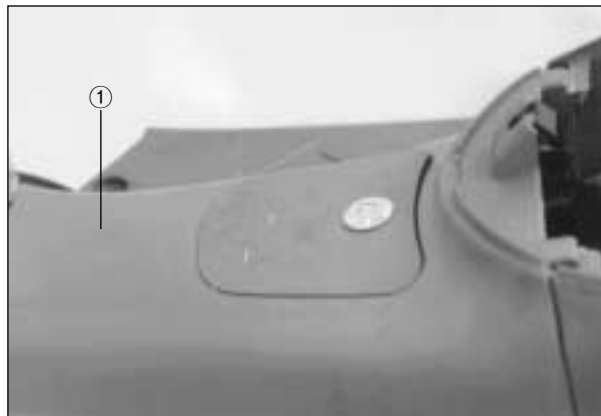
- Install the carburetor top cap.



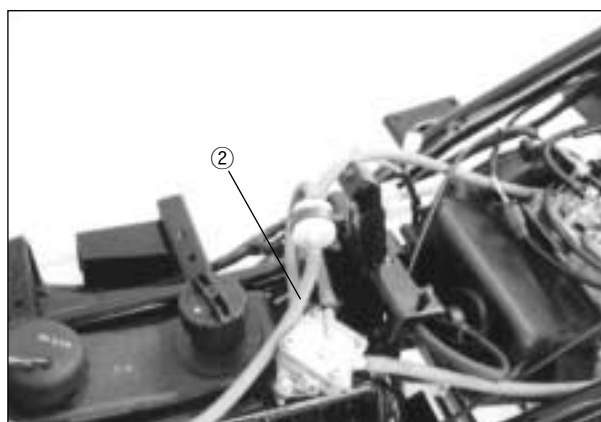
FUEL TANK

REMOVAL

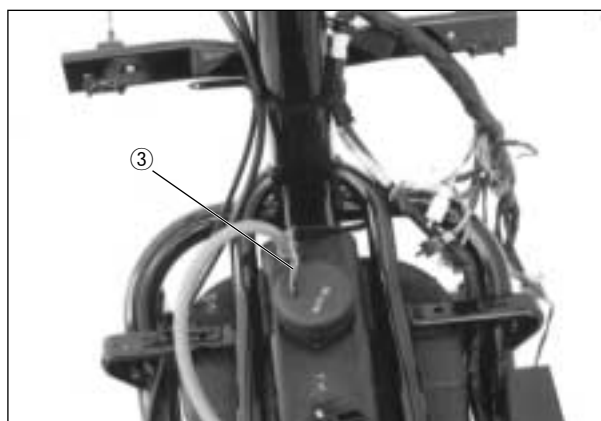
- Remove the low leg shield ①.



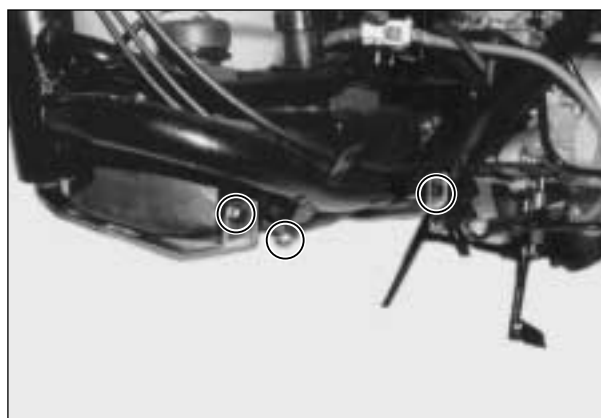
- Disconnect the fuel hose ②.



- Disconnect the fuel level gauge lead wire ③.



- Remove the six fuel tank mounting bolt.



CLEANING

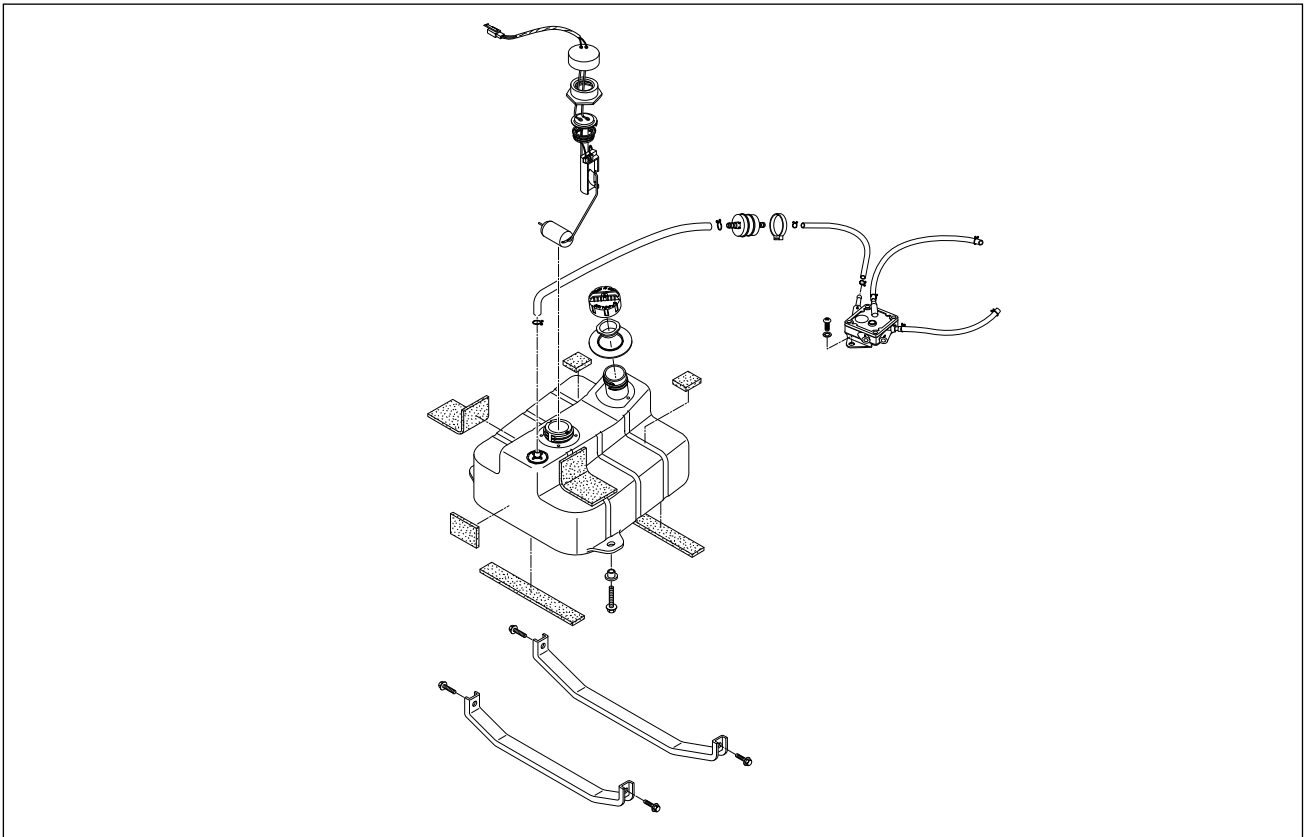
Dust from the fuel tank tends to build up in the fuel filter which, when the fuel filter has been neglected for a long period, inhibits the flow of fuel.

Remove the dust from the fuel filter ① using compressed air.



REMOUNTING

Remount the fuel tank in the reverse of removal.



OIL PUMP

AIR BLEEDING

Whenever evidence is noted of some air having leaked into the oil pipe from the oil tank in a machine brought in for servicing, or if the oil pump has to be removed for servicing, be sure to carry out an air bleeding operation with the oil pump in place before returning the machine to the user.

To bleed air, hold the machine in standstill condition. Loosen the air bleeding screw ① to let out air and after making sure that the trapped air has all been bled, tighten the air bleeding screw completely.



4-9 FUEL SYSTEM

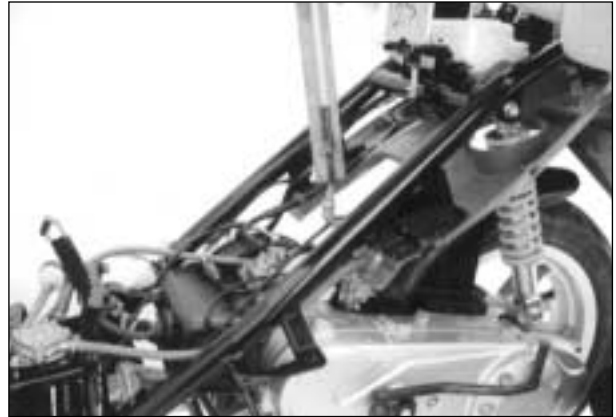
CHECKING OIL PUMP

Use the special tool, to check the pump for capacity by measuring the amount of oil the pump draws during the specified interval.

- Remove the left side cover.
- Have the CCI Oil gauge filled with HYOSUNG HYPOL OIL and connect it to the suction side of the pump.
- Run the engine at 3,000 rpm.
- Holding engine speed at the same 3,000 rpm, let the pump draw for 5 minutes. For this operation, the reading taken on the device should be 6 ml.



CCI Oil gauge : 09900-21602



**Engine oil
discharge amount**

1.0 ~ 1.2 ml
(at 3,000 rpm for 5 minutes)

CAUTION

During this inspection, strictly follow the following points.

- The machine should be rested on the center stand.
- Do not touch the rear wheel while running the engine.

FUEL PUMP

REPLACE

- Remove the rear shock absorber, and support the center stand by a 70 mm wooden block.
- Open the seat, and remove the trunk by loosening the four nuts.
- Remove the one lock nut of fuel pump.
 - ① Disconnect the inlet hose.

CAUTION

Stop up an entrance of the hose, to prevent that the fuel leak out.

- ② Disconnect the vacuum hose and outlet hose.
- Remount in the reverse of removal after replacing the fuel pump.

