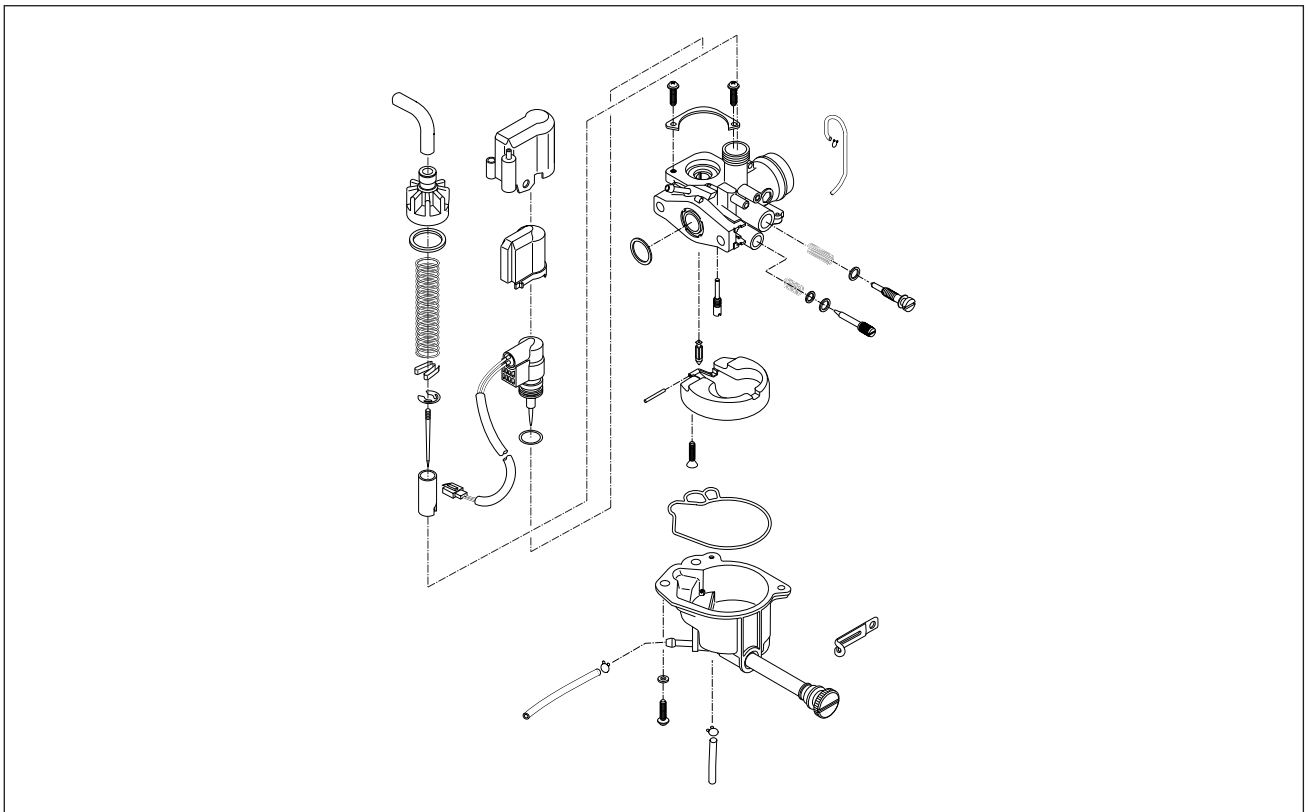


FUEL SYSTEM

CONTENTS

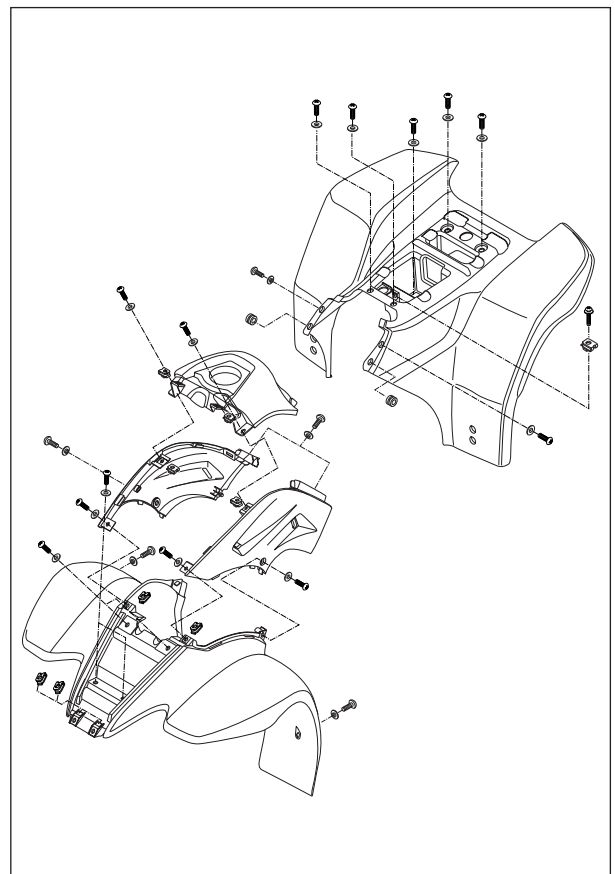
CARBURETOR	4- 1
REMOVAL	4- 1
DISASSEMBLY	4- 2
INSPECTION	4- 4
REASSEMBLY AND REMOUNTING	4- 5
FUEL TANK	4- 7
REMOVAL	4- 7
INSPECTION	4- 7
REMOUNTING	4- 8
OIL PUMP	4- 8

CARBURETOR



REMOVAL

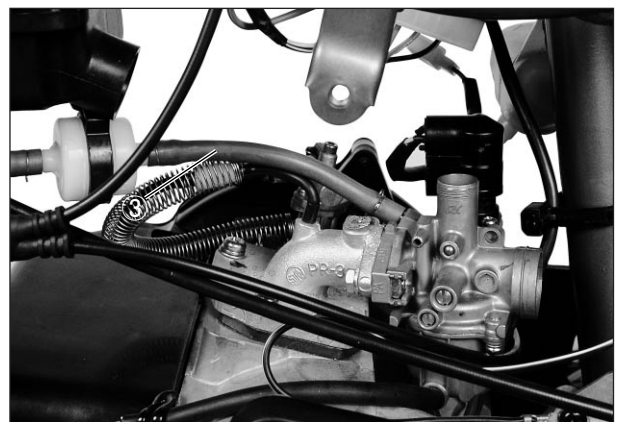
- Remove the front and rear fender.



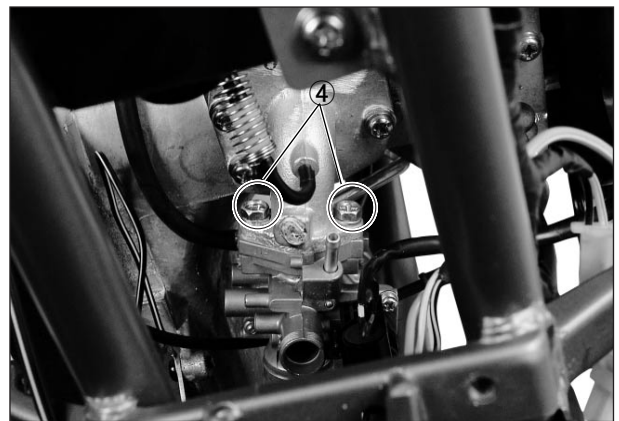
- Remove the carburetor top cap ①, and disconnect the throttle cable ②.



- Disconnect the fuel hose ③.



- Remove the carburetor by loosening the mounting bolts ④ .



DISASSEMBLY

- Remove the thermoelement assembly.



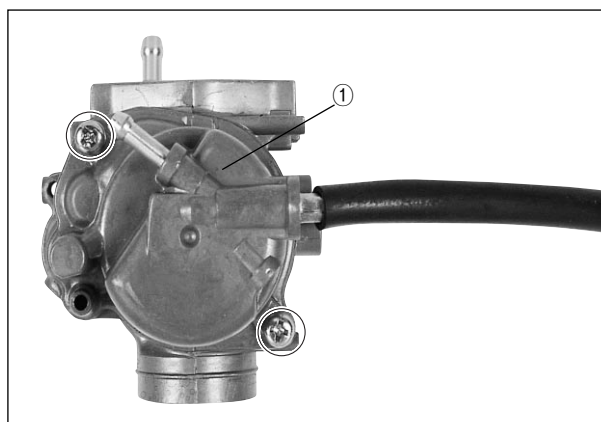
4-3 FUEL SYSTEM

⚠ CAUTION

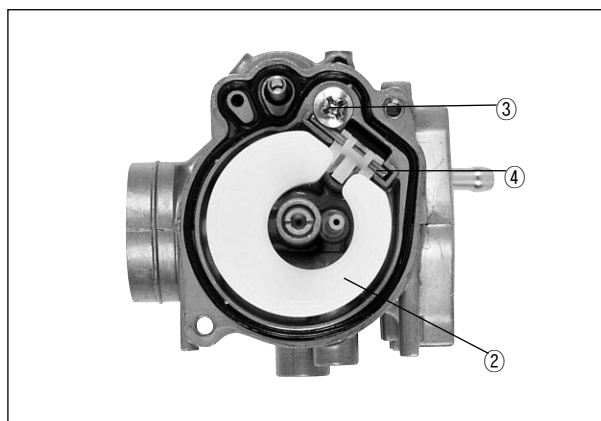
Do not attempt to disassemble the thermoelement assembly.
It is not serviceable.



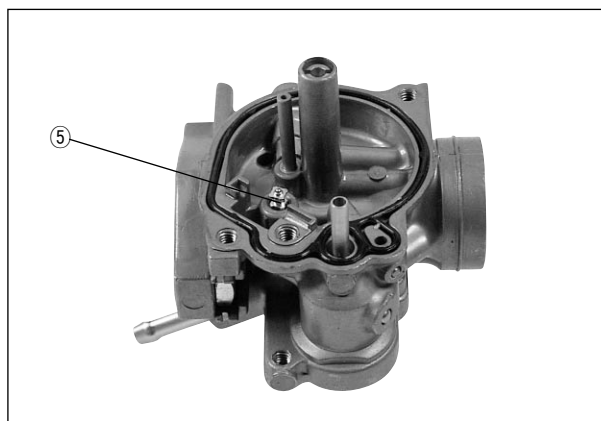
- Remove the float chamber ①.



- Remove the float ② by removing the screw ③ and pin ④.



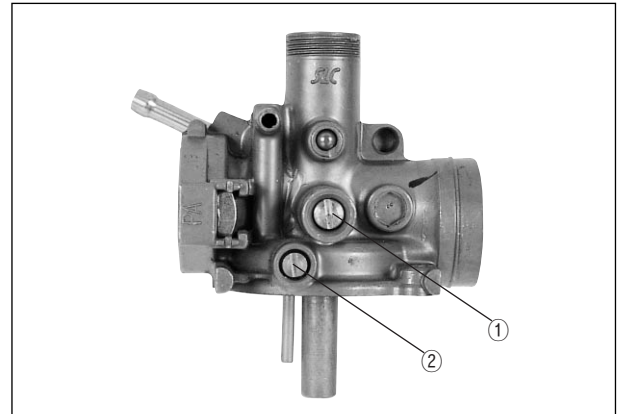
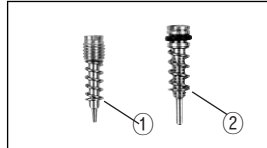
- Remove the needle valve ⑤.



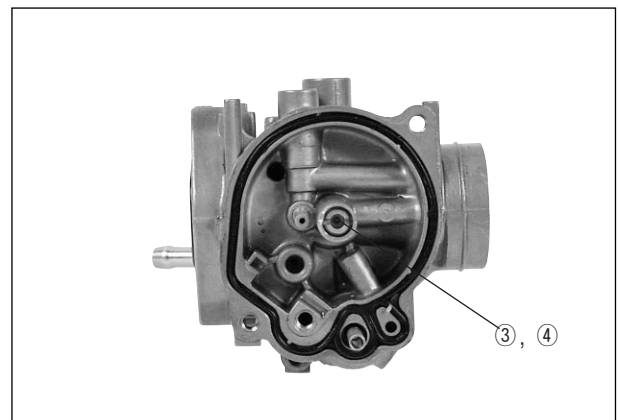
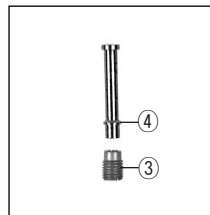
- Remove the throttle stop screw ① and pilot air screw ② .

CAUTION

When removing the pilot air screw, record the revolutions until tighten completely.



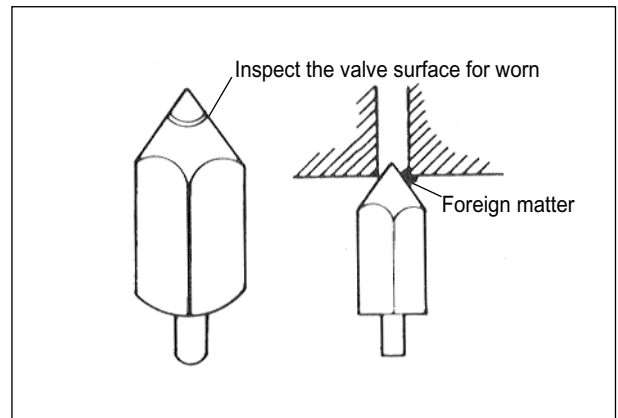
- Remove the main jet ③ and needle jet ④.



INSPECTION

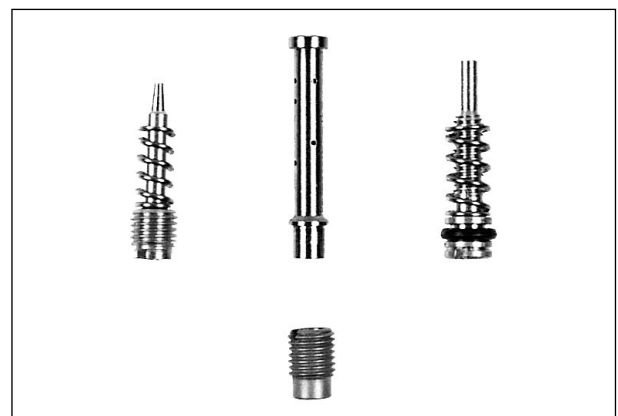
Check following items for any damage or clogging.

- Pilot jet
- Main jet
- Pilot air screw
- Needle jet air bleeding hole
- Float
- Gasket
- Pilot outlet and bypass holes



◎ **NEEDLE VALVE INSPECTION**

If foreign matter is caught between the valve seat and the needle, the gasoline will continue flowing and cause it to overflow. If the seat and needle are worn beyond the permissible limits, similar trouble will occur. Conversely, if the needle sticks, the gasoline will not float chamber. Clean the float chamber and float parts with gasoline. If the needle is worn as shown in the illustration, replace it together with a valve seat. Clean the fuel passage of the mixing chamber with compressed air.

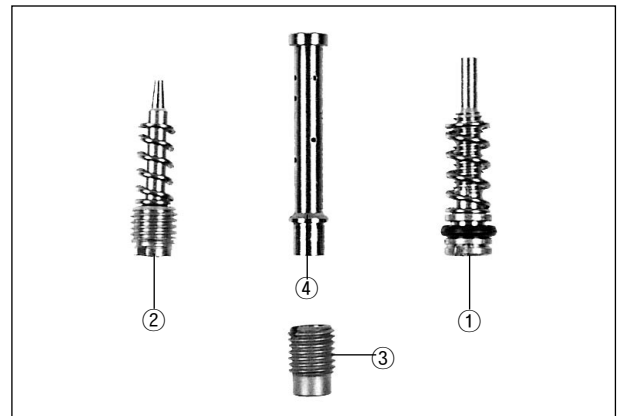


4-5 FUEL SYSTEM

REASSEMBLY AND REMOUNTING

● Reassemble following items.

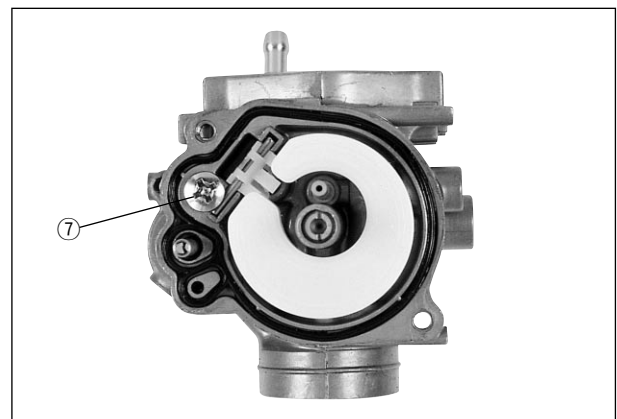
- ① Pilot air screw
- ② Throttle stop screw
- ③ Main jet
- ④ Needle jet



● Install the needle valve (5) and float (6) on the carburetor body.



- Install the float pin and tightened the screw (7).
- Install the gasket and float chamber.



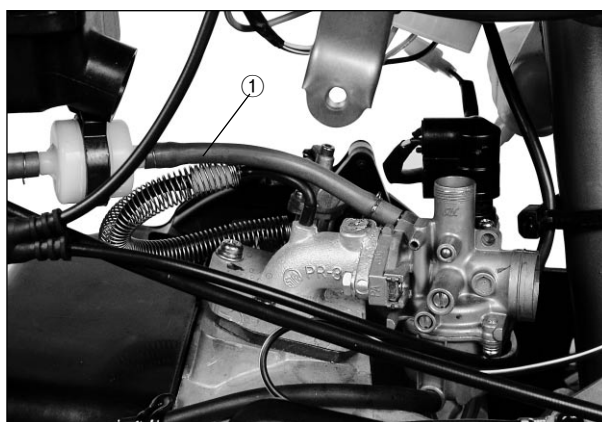
● Install the thermoelement assembly.



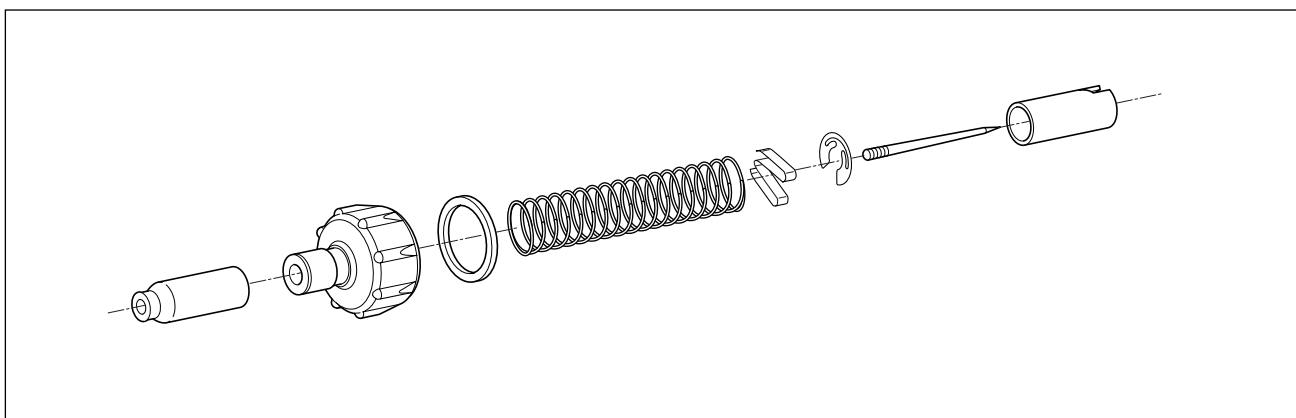
- Install the carburetor assembly.



- Install the fuel hose ①.



- Install the carburetor top cap.



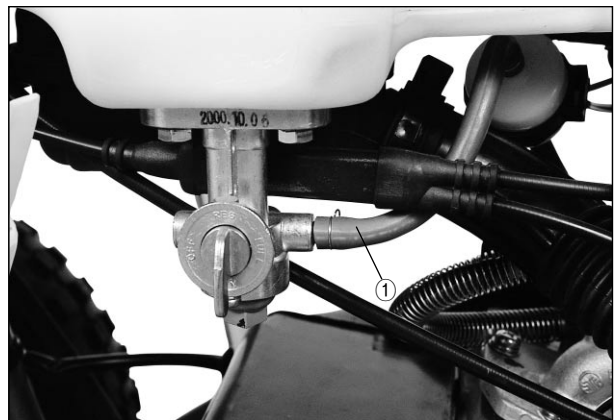
FUEL TANK

REMOVAL

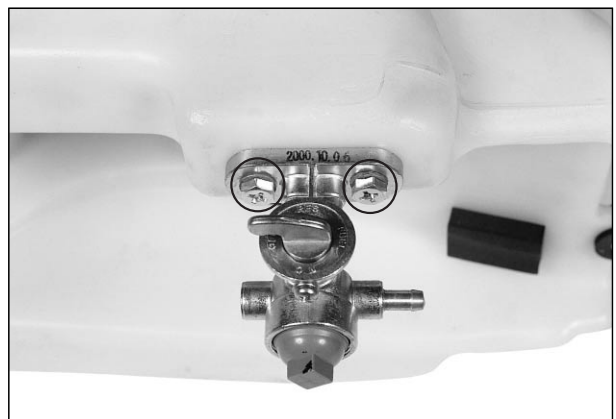
- Remove the frame covers. (Refer to page 4-1)
- Remove the fuel tank mounting bolts.



- Turn the fuel cock to OFF and disconnect the fuel hose ①.
- Remove the fuel tank.



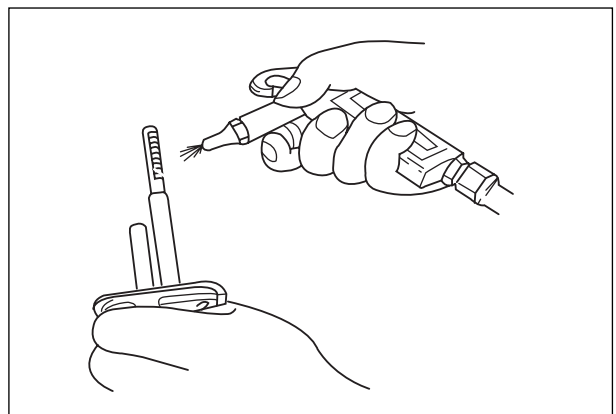
- Remove the fuel cock.



INSPECTION

⊙ FUEL COCK

If the fuel filter is dirty with sediment or rust, fuel will not flow smoothly and loss in engine power may result. Clean the fuel filter with compressed air. Also check the fuel cock for cracks.

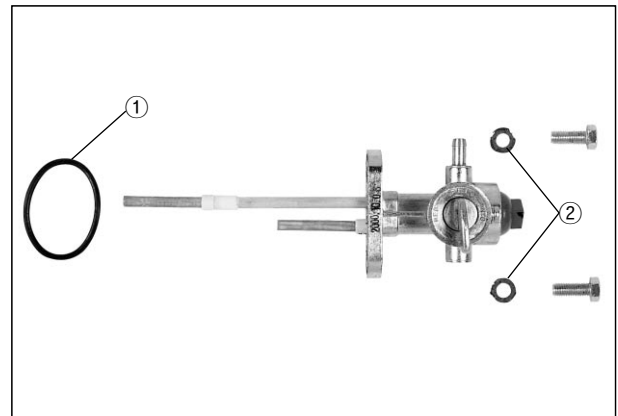


REMOUNTING

Remount the fuel tank and fuel cock in the reverse order of removal.

⚠ WARNING

- ❖ Gaskets ① and ② must be replaced with new ones to prevent fuel leakage.
- ❖ Tighten the fuel cock bolts evenly.

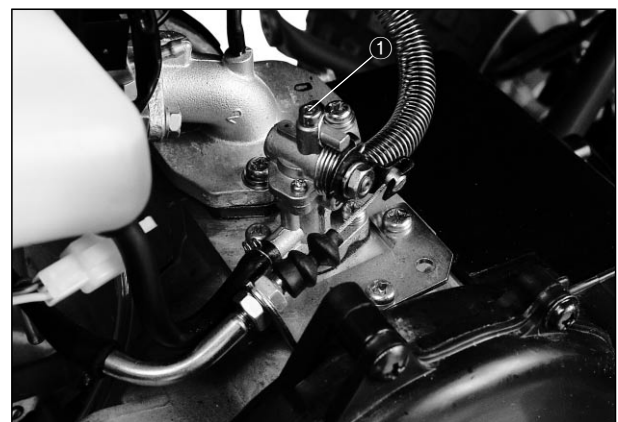


OIL PUMP

⊙ AIR BLEEDING

Whenever evidence is noted of some air having leaked into the oil pipe from the oil tank in a machine brought in for servicing, or if the oil pump has to be removed for servicing, be sure to carry out an air bleeding operating with the oil pump in place before returning the vehicle to the user.

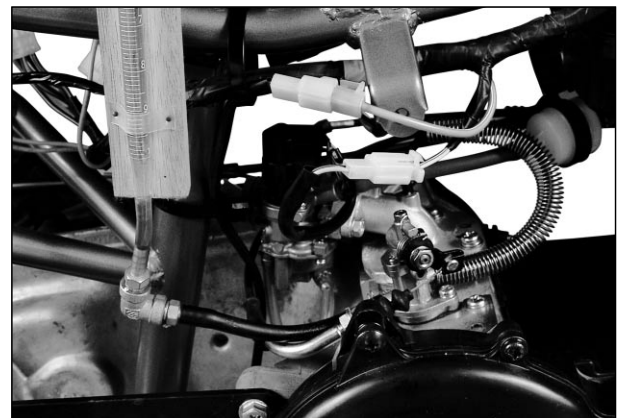
To bleed air, hold the vehicle in standstill condition. Loosen the air bleeding screw ① to let out air and after making sure that the trapped air has all been bled, tighten the air bleeding screw completely.



⊙ CHECKING OIL PUMP

Use the special tool, to check the pump for capacity by measuring the amount of oil the pump draws during the specified interval.

- Remove the frame cover.
- Have the CCI Oil gauge filled with HYOSUNG HYPOL OIL HS and connect it to the suction side of the pump.
- Run the engine at 3,000 rpm.
- Holding engine speed at the same 3,000 rpm, let the pump draw for 5 minutes. For this operation, the reading taken on the device should be 0.9 ~ 1.1ml.



 CCI Oil gauge : 09900-21602

Engine oil discharge amount	0.9 ~ 1.1ml (at 3,000 rpm for 5 minutes)
--------------------------------	---

⚠ CAUTION

During this inspection, strictly follow the following points.

- ❖ Do not touch the rear wheel while running the engine.

